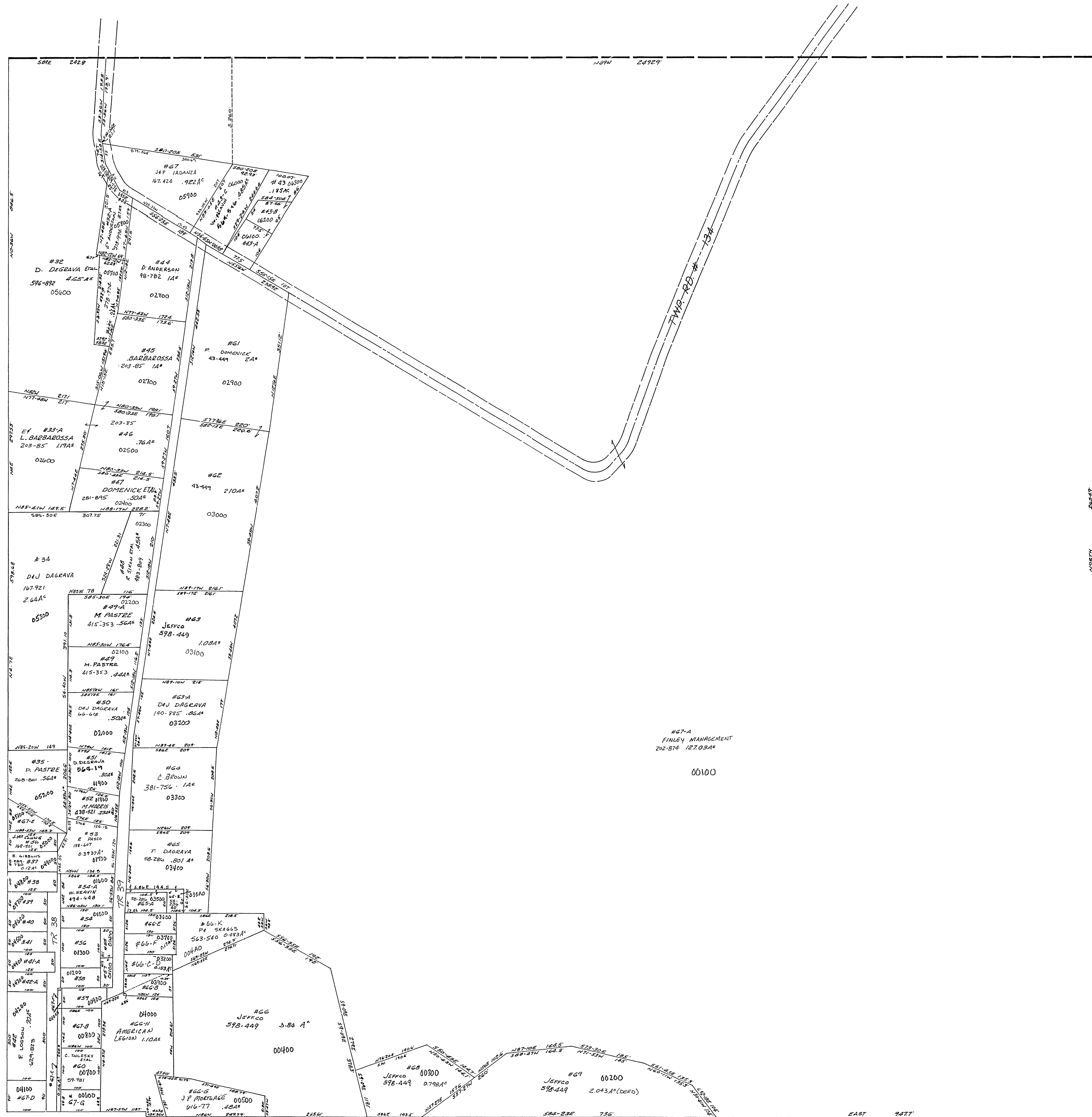
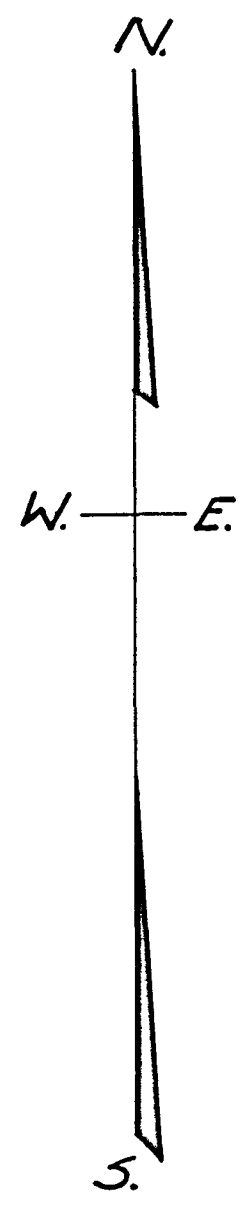


30-22C



#56-C	R.H. SKAGGS	578-833	16.5
#56	J. MOCLUNO	169-901	1.6A
#58	D.Y. VALLAR ETAL	640-885	1.5A
#59	L.H. POLUNO	461-113	1.1A
#60	A.A. BROEMSON	542-123	1.1A
#61	"	501-151	0.11A
#62	R.S. JONES	614-336	1.4A
#63	J.H. STAKE	555-471	1.2A
#64-1A3	E. NOVAK	890-381	1.0A
#64B	"	13A	1.3A
#64	G. GRIM	162-785	0.160A
#64	M. MERRIN	244-844	0.20A
#65	E.H. FRANCISCO	159-268	0.5A
#66	E.H. FRANCISCO	342-806	1.0A
#67	E.H. FRANCISCO	159-268	0.5A
#68	E.H. FRANCISCO	159-268	0.5A
#69	F.H. LOGSDON	632-119	1.2A
#69	R. FERDARI	340-528	1.6A
#69C	T.J. JOHNS	629-72	1.524.001A
#69E	P. SKAGGS	563-540	1.6A
#69F	"	17A	1.7A
#69G	V. ZAMPORN	11-66-35	1.2A
#69E	FINLEY MANAGEMENT	202-874	1.4A
#69D	"	1.4A	1.4A
#69A	F.H. LOGSDON	632-119	0.160A
#67-G	FINLEY MANAGEMENT	202-874	0.157A
#67-C	"	0.06A	0.06A
#41	J.H. JONES	512-70	0.12A



SMITHFIELD TWP
 N.E. QUART. SEC. 22, T.8, R.3.
 SCALE: 1"=100'